



# MONTHLY MEMBERSHIP PROGRESS REPORT

District 2 S5

Results as of: 01/31/2019

GMT: GREGORY GILLIAM

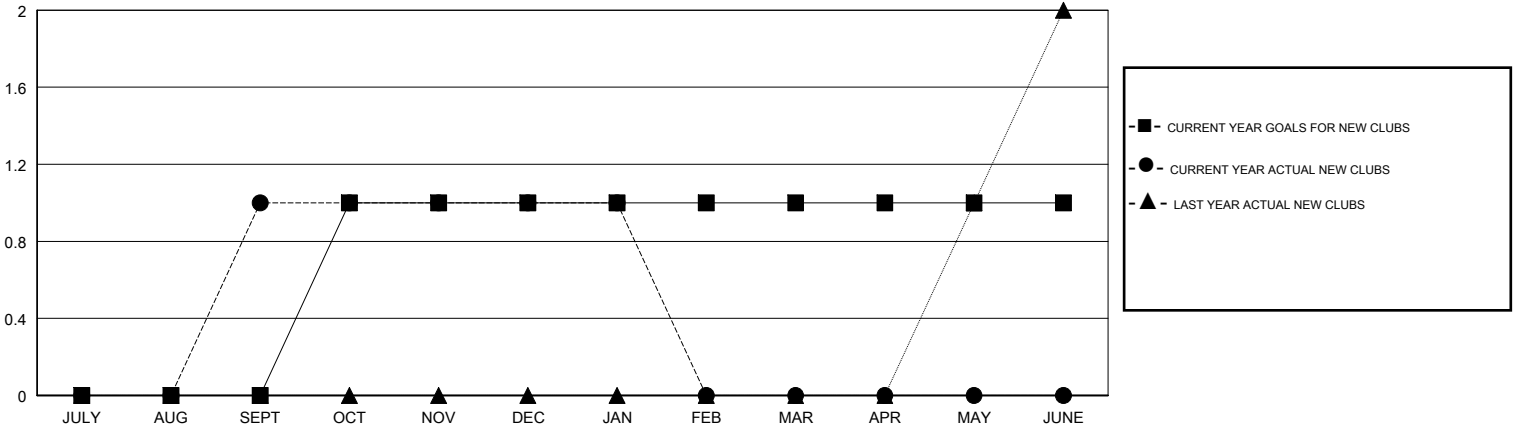
LOCATION TEXAS

GMT CA

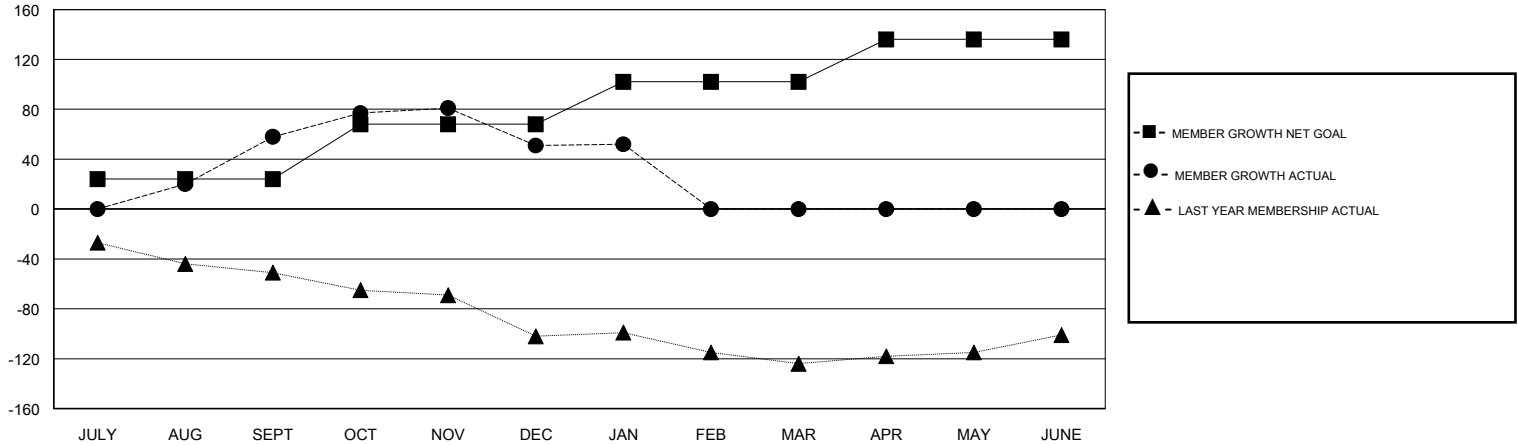
Clubs			
RESULTS FOR 2018-2019			
QUARTER	NEW CLUB GOAL	NEW CLUBS	DROPPED CLUBS
JULY/AUG/SEPT	0	1	0
OCT/NOV/DEC	1	0	0
JAN/FEB/MAR	0	0	0
APR/MAY/JUNE	0	0	0

Members			
RESULTS FOR 2018-2019			
QUARTER	MEMBER GROWTH NET GOAL	MEMBER GROWTH ACTUAL	DROPPED MEMBERS ACTUAL (including transfers)
JULY/AUG/SEPT	24	116	48
OCT/NOV/DEC	44	68	73
JAN/FEB/MAR	34	29	26
APR/MAY/JUNE	34	0	0

GOALS AND ACTUAL NEW CLUBS CUMULATIVE



GOALS AND ACTUAL MEMBERS CUMULATIVE



DROPPED CLUBS: 0
------------------

44 CLUBS OF 62 ADDED 1 OR MORE NEW MEMBERS

GENDER DISTRIBUTION	
MALE	1,497 (61.05%)
FEMALE	955 (38.95%)
Women Percentage Fiscal Year Goal: 40%	

DROPPED MEMBERS	
DECEASED	14
CLUB CANCELLED	0
OTHER	133
<b>TOTAL</b>	<b>147</b>

[CLICK HERE FOR CUMULATIVE MEMBERSHIP DATA](#)

TOTAL FAMILY UNIT MEMBERS	402
FAMILY MEMBERS PAYING HALF DUES	203